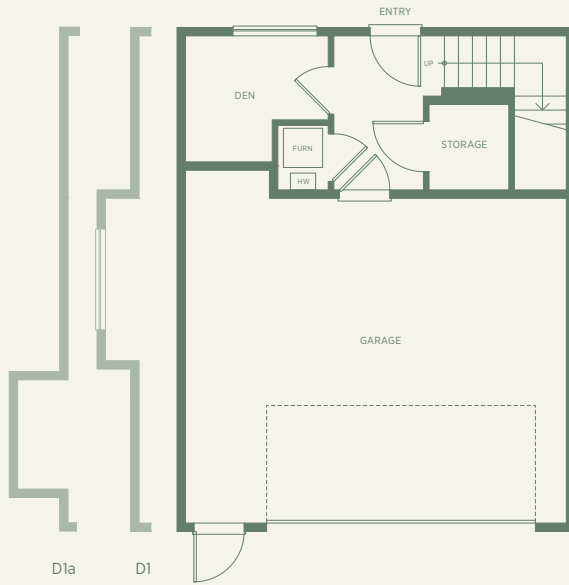


D · D1 · D1a (ADAPTABLE)

3 BEDROOM + DEN • 2.5 BATH • 1641 SQ FT

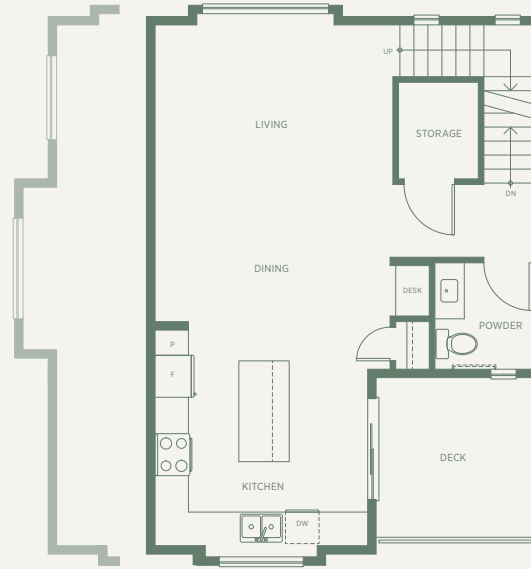
KINSHIP



D1a

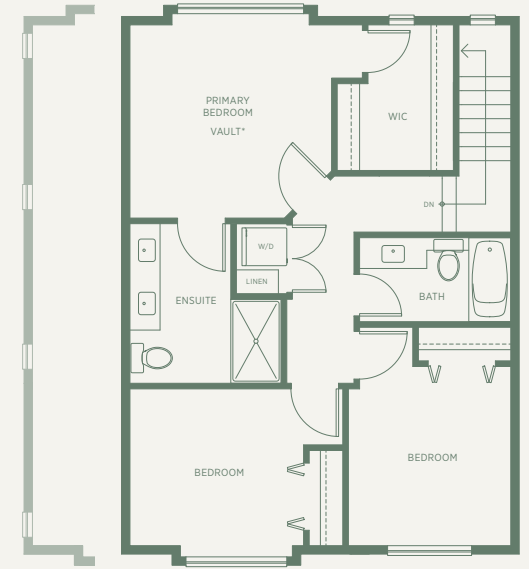
D1

LOWER 228 SQFT



D1

MAIN 655 SQFT



D1

UPPER 758 SQFT

* Primary bedroom ceiling vaults are plan specific.

The developer reserves the right to make modifications and changes to the building design, elevations, dimensions, specifications, features and prices without prior notification. Decks, patios, stairs and windows may vary based on site conditions. All sizes and dimensions are approximate and based on architectural measurements. Reverse and/or mirror plans occur throughout the development. Please see disclosure statement for specific offering once available. E & O.E.

PARK RIDGE
HOMES