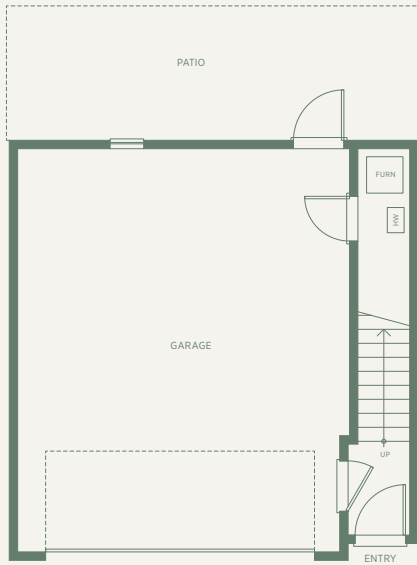
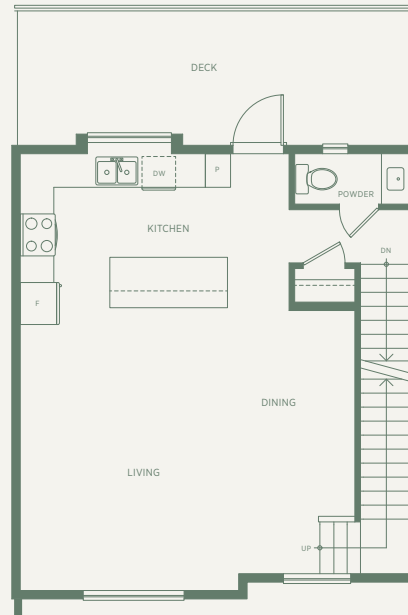


3 BEDROOM • 2.5 BATH • 1427 SQ FT

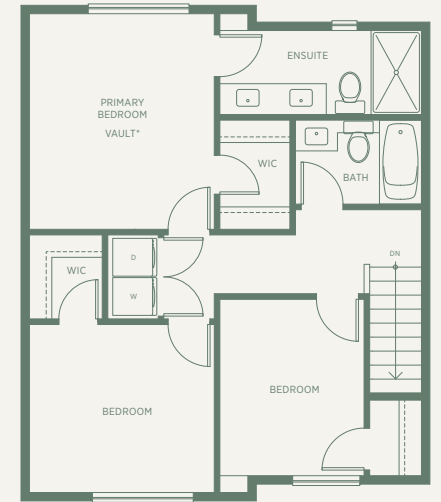
KINSHIP



LOWER 98 SQFT



MAIN 642 SQFT



UPPER 688 SQFT

* Primary bedroom ceiling vaults are plan specific.
 The developer reserves the right to make modifications and changes to the building design, elevations, dimensions, specifications, features and prices without prior notification. Decks, patios, stairs and windows may vary based on site conditions. All sizes and dimensions are approximate and based on architectural measurements. Reverse and/or mirror plans occur throughout the development. Please see disclosure statement for specific offering once available. E & O.E.

